



Castlemaine Community House

Faulder Watson Hall, 210 Barker Street, Castlemaine VIC 3450

phone: 5472 4842 | fax: 5470 5094

email: info@cch.org.au | www.cch.org.au

Incorporated number: A0005623J

castlemaine community house



annual report
2012/13



contents



Page

- 1 History of the House
- 2 Organisation
Committee of Management
- 3 Committee of Management Report
- 4 Manager's Report
- 5 Staff and Volunteers
Spring Ball
- 6 Education
Adult Community & Further Education
Fee for Service
Partnerships
- 8 Community Development
Community Lunch
Music Playgroup
Centrelink & Medicare Agencies
Public Internet Access program
Choirs
Mount Alexander No Interest Loan Scheme
Stronger Families Program
Aboriginal Reconciliation
Affordable & Secure Housing
- 10 Growing Abundance
Harvest Group
Food For Thought
CAKE
School Canteen
Healthy Communities
For the Record
- 13 Financial Statements



history of the house



The Castlemaine Community House was established in 1985 following lengthy consultation and lobbying from the Castlemaine community. A Family and Community Services community grant of \$3,255 funded a pilot neighbourhood centre to "provide an easily accessible meeting point for all people in the local or broader Castlemaine area". How little things change . . . 28 years later this remains one of the Community House's central objectives.

The initial community facility operated from the old CWA rooms, adjacent to the RSL building, and were used by community groups such as the Community Coffee Morning Group, the South School Neighbourhood Group and the Castlemaine Men's Group. The centre opened to the public on 4 July 1985 as the Castlemaine Community Drop In Centre. Early programs and courses included sewing, ceramics, hobbytex, microwave cooking and skincare! A version of community lunch operated even in the early days with community members invited to bring a plate to share once a week.

The House is currently located at the Faulder Watson Hall in Barker St Castlemaine. However, with the significant expansion of the organisation and our programs, we are now seeking larger facilities. At the time of writing this report, we are involved in encouraging discussions to secure more permanent accommodation that better meets the needs of the Community House and our many programs.



organisation



Our Vision

Our vision is for a creative, dynamic and connected community.

Our Identity Statement

Castlemaine Community House is a welcoming place, bringing people together to connect and strengthen our community.

What is a Community House?

The Castlemaine Community House is one of over 350 community houses in Victoria. Also called neighbourhood houses and learning centres, these local organisations provide social, educational and recreational activities for their communities in a welcoming supportive environment.

Neighbourhood House Networks

The Castlemaine Community House continues to be involved in the development of Neighbourhood Houses in Victoria and the region through the Association of Neighbourhood House and Learning Centres (ANHLC) and the Regional Association of Neighbourhood & Community Houses (RANCH) – a Loddon Mallee network of neighbourhood and community houses. Members of the management committee and volunteers attended RANCH meetings and conferences.



Programs and Operations

Castlemaine Community House especially recognises the invaluable dedication and skills provided by the many staff and volunteers who ensure the organisation is able to deliver our many programs.

These programs and operations include:

- Community Development Programs
- Education programs
- Growing Abundance
- Social Enterprises (CAKE Catering and Castlemaine Secondary College Canteens)
- Centrelink and Medicare Agencies
- No Interest Loans Scheme
- Reception and Office Coordination
- Marketing and External Communications
- Bookkeeping and Financial Management

Committee of Management

Ilana Solo – Chair
Robyn Till – Deputy Chair
Tosh Szatow – Treasurer
Bronwen Machin – Secretary
Carol Foster – Ordinary Member
Sandra Goode – Ordinary Member

Management

Martyn Shaddick – Manager

committee of management



Many readers won't be aware of the enormous efforts put in by our Board members who represent the "community" to help make the organisation tick. In particular we acknowledge Ujjval Goble, our outgoing Chair, who had a particularly important role in building our relationships with other organisations, and steering strategy, and Carol Foster, a long-time member of the committee, who plays a passionate and grounding role.

This year we had some new and active members including the indefatigable Bronwen Machin, our Secretary, and highly skilled Tosh Szatow, our Treasurer. Sandra Goode and Robin Till brought significant expertise and skills into what I believe is a very strong governance role in the house.

After a short hiatus from the Castlemaine Community House Board, I returned as Chair in August. In the interim we said a warm goodbye to Ron Moore who had led the organisation for 19 years. I had only known Ron for five of those years but his



generosity of spirit is contagious. I was brought to the house via the Music Playgroup with Ron being the exemplar of welcoming to all. Ron led the house from being a very small organisation with a culture of a family through enormous growth over these years. He is indelibly stamped on our culture and our ways of being – with his wisdom and mottos about community development and engagement.

When it was time for Ron to retire we did a lot of thinking about what the next direction should be and we determined that we needed to maintain the community development approach but invest in a full-time manager. We had a superb candidate field for the role and chose Martyn Shaddick, whose enormous achievements are already shining through in his Manager's Report on page four.

On behalf of the Board I also want to extend a special thanks to the staff and volunteers of the house who really have put up with a lot, with endless good humour and diligence.

Looking to the future and as an overarching model for the next year, a strategic plan is being developed. This plan targets our six key outcome pillars: our community, our people, our funding, our management, our partnerships and our facilities.

Ilana Solo, Castlemaine Community House Committee of Management, Chair



manager's report



From 16 April 2013 Castlemaine Community House was under new management, following Ron Moore's retirement. In his 19 years as manager, Ron provided the leadership for the development of countless programs, and his legacy can be seen clearly in our new documentary about the Castlemaine Community Lunch, a program that provides a healthy and delicious two-course meal to over 100 people each Tuesday.

Ron left the Community House with a skilled and dedicated team of staff and volunteers, running a diverse range of programs and services, from community education and food security programs to the No Interest Loan Scheme and Centrelink agency. A key focus now is to support the staff and volunteers through a comprehensive review of our human resources requirements. The aim is to improve the stability of employment conditions, while also ensuring we have contemporary systems and processes to deliver professional community services.



My initial focus is to secure ongoing financial sustainability for the organisation, while also securing appropriate facilities for our operations. Our current facilities at the Faulder Watson Hall are overcrowded and are far from meeting our service delivery requirements. Various options are being targeted to address our accommodation situation and we are working closely with Mount Alexander Shire Council and likeminded agencies in search of a solution.

A sad consequence of the current facilities is the inability to meet the community needs at our Occasional Childcare Service. The remote location and limited opening hours have resulted in this service operating at a loss. The service was closed in September 2013, but the Childcare Licence has been suspended so that the operations can be re-established if suitable facilities are secured.

I come to CCH with a background in social work, with a strong focus on advocacy, human rights and social justice. Before joining CCH, I developed and managed a supported transitional accommodation service for people seeking asylum. Coming from work in housing, case management and business development, I aim to further enhance the remarkable community development base at CCH.

I look forward to working with staff and the Committee of Management on the development of our strategic plan.

Martyn Shaddick, Manager



staff and volunteers

The vast array of programs operated by Castlemaine Community House are coordinated by a small team of paid workers. Many of these programs also rely on a vital team of dedicated and skilled volunteers. Our volunteers cover everything from front of house and office coordination to food preparation at our community lunch. We gratefully acknowledge and celebrate the wonderful and invaluable contribution of our staff and volunteers, without whom our operations could not function.



spring ball

The Castlemaine Community House Spring Ball has become an institution across the Mount Alexander Shire and beyond. This year's theme was 'Punk' and over 200 partygoers filled the Castlemaine Town Hall to celebrate and support the Community House and all that we stand for. As our major fundraising event each year, we use the profits from the Spring Ball to support our many services to the community, such as music playgroup, computer support, and community lunch, all of which operate with no other funding.

This year, the Spring Ball looks to have delivered profits in excess of \$7,500.

We would like to thank the many volunteers that make this event possible. Everything from decorating the Town Hall, operating the bar and cleaning up after the event relies on the generous support of our volunteers. We would also like to thank the Shire of Mount Alexander Council for their generous support.



education report



Castlemaine Community House receives state funding through Adult Community and Further Education (ACFE) to conduct vocational and education courses which provide pathways to employment, further study and community connection. In 2013 we were successful in applying for extra funding from ACFE, and delivered a far greater number of student contact hours than the hours initially allocated. Initially we were allocated funding for 2,880 hours (\$20,708). We were able to increase this to 4,248 student contact hours, which meant an increase in funding to \$30,544. The strongest course is still Permaculture Design, which ran twice in 2013. Cook Fresh, Cook Local classes have responded to the need to train professional caterers for the catering arm of Growing Abundance, CAKE, and the Castlemaine Secondary College canteen creating more sustainable and healthy outcomes for students and the local community. We also offered computer training for Apple Mac users, which is not available from any of the other local providers. We are also working with Maldon Neighbourhood Centre to deliver a small business course in Castlemaine, but funded by ACFE through MNC.



Our education program has worked closely with the Growing Abundance Project to provide a large number of food-related workshops and short courses which we have included in the programme we publish each term and on our website.



Our fee-for-service classes this year included Yoga, Nia Dance and Spanish, which has had a great uptake of 42 students over the year. We added a new class in making small clay models which attracted a committed group of students, although it was limited by the lack of an adequate space and a kiln for such a specialised activity. Remaining a favourite is the Watercolour Class with legendary tutor Hilary Loftus. Hilary has been conducting classes for over 10 years for the community of Castlemaine. This year three students moved on from Hilary's class to take the Art Pathway at Continuing Education – but we have heard that two of them intend to come back to do more advanced watercolour painting with Hilary.



We are developing more programs for children, with drama (through Fenestra Theatre), music (the Blendettes choir), and circus skills (provided by a qualified instructor and gymnast).

Castlemaine Community House has formed a variety of relationships in the shire to provide appropriate sites for our wide range of courses and activities. In addition to premises controlled by Mount Alexander Shire, we have used TAFE, The Forge, Uniting Church, Anglican Church, South School, Junior and Senior Campus of the Secondary College, Continuing Education, the Art Supplies shop and The Old Gaol complex.

Coordinating venue access takes a large part of the time of the Education Coordinator. In addition to the classes mentioned above, we have had to find spaces for other activities like the chess club, tai chi, our many community choirs, music playgroup, the new bush playgroup, and Community Lunch. Many activities and classes are free or have just a gold coin donation attached to them and this would not be possible without the immense help and contribution from our volunteers.

Castlemaine Community House, Castlemaine Continuing Education, the Bendigo TAFE and Maldon Neighbourhood Centre have collaborated to look to the future of adult and community to form MATCH – Mount Alexander Training Community Hub. This group will act as a conduit to all local providers, providing information on all the local training. The website was launched on 9 October in the Library foyer with over 40 people in attendance, and community consultations have commenced across the shire to gain understanding of community training and education needs so that we can offer appropriate courses. Students will also be encouraged to progress from introductory courses with us to certificated training with other providers.

Karen McMullan, Education Coordinator



community development

Castlemaine Community House maintains community development as our key focus, with a range of long standing and newer projects and programs to report on.

community lunch

Community Lunch provides a two-course cooked meal for over 100 people each Tuesday during school terms. The lunch is temporarily being held at the Old Castlemaine Gaol while the Town Hall undergoes renovations. We are very grateful for the flexibility offered by the owners of the Old Gaol. We also thank the Shire of Mount Alexander for the use of the Town Hall for this program and for providing the shuttle bus to assist those in need of support to attend the Community Lunch while it is at the Old Gaol.

Our community lunch is widely regarded as a program other places could copy. It has an emphasis on fresh vegetables and fruit, much of it donated by local suppliers, and it is cooked by a growing team of volunteers, who enjoy the social interaction in the kitchen and the joy of cooking for large numbers.

Through the Shire's Healthy Communities Initiative, and with funding from the Helen McPherson Smith Trust, two local filmmakers, Denise Martin and Davide Michielin, have made a short film of our community lunch which is now on youtube and is being used to promote the idea not just of the healthy food but of the shared experience, which while open to all has successfully engaged a number of otherwise isolated community members.



music playgroup

The Music Playgroup has provided a social experience for little people and their carers for over 20 years. This year, we expanded the program out to Taradale Primary School, providing the skills to the community to run this event. This year we helped a group of parents to provide a bush playgroup in the Botanic Gardens.

Centrelink and Medicare agencies

Castlemaine Community House took over the Centrelink and Medicare Agency in Castlemaine in September 2012. The service provides direct support to over 5,000 people each year, but also assists in linking the public to the other programs operated by the house. The successful operation of this program by the Community House has been recognised by the Department of Human Services and our contract was renewed for another year in July 2013.



public internet access program

Public Access Computers were provided by the State Library of Victoria. We now have three computers in continuous use by members of the community – including many who come in to access the Centrelink agency.



choirs

The Peace Choir has been a Castlemaine Community House program since 2007. The choir offers a supportive environment for people who experience social isolation or intellectual disabilities. Partners of the Peace Choir are the Angel Fund (a local philanthropic fund), Maine Connection (local advocacy and support group for people with mental health issues), Making Music (choir leaders), St.Luke's (mental health service provider), Uniting Church Castlemaine, and Windarring (association for people with disabilities). The Peace Choir works with community development principles and was initiated to address issues of social isolation, provide support, and enable interaction and skill development.

Our choirs Maine Song, the Blenders, Blendettes and the Chatwarblers, meet weekly and sing at many events, this year including the Castlemaine State Festival. The Chatwarblers have recorded a CD of songs, to be released before the end of 2013.

no interest loan scheme

The Mount Alexander NILS operates under the auspice of the Castlemaine Community House. The program provides no interest loans to people on low incomes. The Home Energy Saver Scheme (HESS) is also operated by the NILS program, providing rebates on energy efficient household appliances when purchased with the assistance of a NILS loan. Castlemaine NILS operates with an average of 60 active loans to a total value exceeding \$35,000.



stronger families program

The Stronger Families Program at Loddon Prison enables dads to spend time with their children, to build parenting skills and encourage positive interactions between parents and children. It enables them to spend time together in a relaxed, comfortable environment, playing with toys, singing, cuddling together and reading a book, celebrating birthdays, and so on. It is especially important for those whose relationships with wives and partners have broken down but who are able, with our help, to maintain their relationships with their children.

Aboriginal Reconciliation is supported by Castlemaine Community House through active membership of the MAS Community Aboriginal Events Planning Committee, a committee run by CHIRP and including membership from St Luke's Anglicare, churches, the Council, U3A, doctors, Mecu, Uncle Rick Nelson, a local Jaara elder, Uncle Phil Ahwang, a senior Torres Strait islander, and local people with expertise and passion. The purpose of the Committee has been to celebrate days that are important to Aboriginal and Torres Strait Islands people and to strengthen moves towards reconciliation. In 2013 the Committee helped organise May 26 National Sorry Day and events and the display that ran in the Market Building during the first week of June, including activities for children, a photographic competition for secondary school children and a Kup Muri (earth baked dinner).



affordable housing

Affordable and secure housing across Castlemaine remains a concern. Castlemaine Community House has implemented a study to secure a greater understanding of the housing difficulties, as well as identifying possible partnerships and changes needed to support potential solutions.

community development

growing abundance



Despite the climate challenges, it's been an abundant year for the Growing Abundance project. With ongoing philanthropic support and the partnership with Healthy Active Living in Mount Alexander, along with a very dedicated group of staff and abundant support from volunteers, we are forging our way to a new vision for food in our community. Each week over 590 people receive the Growing Abundance email newsletter which shares information about our events, partner organisations, events related to food growing and cooking, seasonal food growing tips (in partnership with Grow Great Fruit) and links to related initiatives globally. This has been part of expanding our volunteer base, and we welcome the wonderful support and involvement they bring!

Growing Abundance was central to the Castlemaine State Festival on the Living Stage, and CAKE prepared a Long Table Lunch, as a precursor to Castlemaine's second Iron Chef competition backed delightfully by Castlemaine South Primary School's Carmen Mirandas.



harvest

Despite low rainfall and increasing numbers of hungry cockatoos and rosellas, during the 2013 harvest season (February-June) we harvested 7.5 tonnes of fruit at 38 harvests involving 270 people. Over 150kg of fruit was distributed each week to local schools and community organisations (14 sites in total) with the remainder going to harvest volunteers, community 'food jams' and fruit-tree owners. A number of new backyards came on board

to be harvested in 2013 with quantities of trees ranging between 3 and 1000.

All backyard and street fruit trees harvested in 2013 were also pruned and maintained by a team of volunteers at weekly 'Prune Along' sessions and nine fruit-tree maintenance workshops. The training of seven new Harvest Team Leaders has greatly increased the program's capacity and efficiency.

In response to a warm and wet spring, over 350 litres of copper sulphate were distributed for a gold coin donation for 'Organic Curly Leaf' prevention. This was enough to spray over 1,000 trees.

The enterprise arm of Harvest continues to grow. We sold 180 wooden crates for conversion into garden beds, distributed 20m3 of quality compost, and employed four casual pruners. Community

food for thought

This year we continued to share inspiring ideas. We held five dynamic lunchtime events showcasing local food advocates, with around 40 people attending each one. A highlight was feasting among the blossom of Mount Alexander Fruit Gardens.

partnerships with The Hub Plot, Grow Great Fruit and the Newstead Community Garden also continue to grow, coordinating seasonal workshops and contributing a joint monthly gardening column to the local paper, the Castlemaine Mail. Links with local primary schools have grown. Students from Chewton Primary School attending an apple harvest, and school visits and activities were run by the Harvest Coordinator at three other local schools.

The Harvest group has continued to act as a node linking people who need work with people who need garden help, those who want quality garden materials with those who can supply them, those with excess produce with those that can use it, those with land they want grown on and those who want to do the growing. Through the involvement of the Harvest group in the Living Stage project at the state festival, we were able to organise the redistribution of around 20 new garden beds (over 30m2 of new productive food gardens) to local community gardening groups including St. Luke's and the Salvation Army.



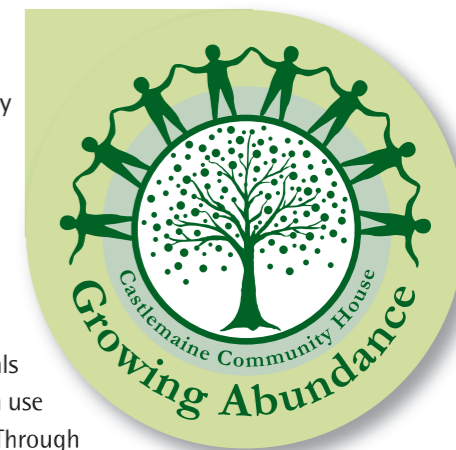
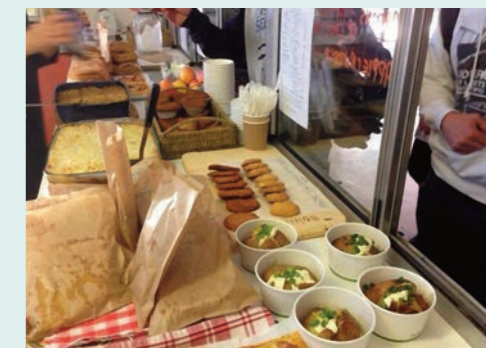
cake

Castlemaine Abundance Kitchen Enterprise (CAKE) ran five 'food jams', bringing people together to bottle or preserve seasonal gluts. Apple juicing continues to be fruitful, processing 400kg of apples each time we gather with between 15-40 people participating. Seasonal feasts/fundraising events and 'Cook Fresh, Cook Local' training for caterers, as well as ten workshops on simple preserving (making tomato sauce, rhubarb relish and citrus marmalade, and preserving olives), three Simple Seasonal cooking workshops, and specialist classes on making cider, sourdough bread and miso, and using edible weeds, attracted an average of 18 people. A new workshop to the calendar this year to support those with skills to share, but no teaching confidence, 'how to run a workshop', was popular.

CAKE has experienced rapid expansion through our social enterprise CAKE Catering. From a base in the kitchen at the Old Gaol, CAKE Catering provides catering using locally sourced, healthy and delicious ingredients.

school canteen

From January 2013, CAKE Catering has been operating school canteens at both campuses of the Castlemaine Secondary College (CSC), using the same principles of healthy and locally sourced food. CAKE's CSC canteen aims to encourage healthy food options and provide sustainable, healthy, low cost options with minimal waste, whilst re-invigorating the sense of community within the school in regards to the canteen. In running the canteen we are bringing our passion for great, locally produced food into the school, and as a community partnership, the future direction of the canteen will reflect our shared values and aspirations.



community development

healthy communities

This year Growing Abundance had funding from the Healthy Communities Initiative, via the council's Healthy Active Living in Mount Alexander program.

This funding helped expand the reach of the Harvest program through council supported 'Come 'n' Try' days for harvesting and pruning, introducing new people to the program, providing inclusiveness and First Aid Training for seven new Harvest Team leaders, and establishing new partnerships with St Luke's, Windarring, Castlemaine Community Health, Maine Connection, Harcourt CWA and Tarrengower and Loddon Prisons. These partnerships will be ongoing as we work towards strengthening these connections.

Healthy Communities funded a series of CAKE workshops and the creation of a 'Carpark Garden' – a partnership between the Community House, Mount Alexander Shire Council, Castlemaine Continuing Education, and The Hub Plot. The 'Home Grown and Well Preserved' series provides free workshops which have attracted many new people.

We obtained the funding to make the 'Community Lunch in Castlemaine' film that aims to inspire other communities.



for the record

As the 'Local Food Economy' gathers momentum across Australia, Growing Abundance is an established force. With the current funding entering its closing months, Growing Abundance is in a unique circumstance where opportunities to reflect are beckoning in conjunction with requests to share their experiences.

The process of recording 'our story' and compiling a series of resources to help other community groups learn from our model and experiences has begun, with Juliette Anich volunteering to compile the story of Growing Abundance. The Harvest story will be ready by November 2013.

Growing Abundance is also involved in many ongoing conversations and networking opportunities towards building better food systems in Mount Alexander. These include the Sustainable Food Network convened by Mount Alexander Shire Council, and exploration of a large scale local composting operation alongside the Mount Alexander Sustainability Group and local farmers.



financial statements

GOERS & MAUNDER Public Accountants

Partners: Eckhard Goers CPA, NIA, Reg. Tax Agent
Jeffrey Maunder CPA, NIA

AUDIT REPORT TO THE MEMBERS OF CASTLEMAINE COMMUNITY HOUSE Inc.

Audit Scope

We have audited the attached financial report including Profit & Loss and Balance Sheet of the Castlemaine Community House Inc. for the year ended 30 June 2013 in accordance with Australian Auditing Standards. The Castlemaine Community House Inc. Committee is responsible for the maintenance of its books and accounts and our audit included an examination on a test basis of the information and documentation held to support the financial transactions disclosed in the Castlemaine Community House Inc. books and accounts and did not extend beyond the information contained therein. The audit was unable to confirm that all amounts received were banked. The audit procedures were conducted to form an opinion, whether in all material aspects, the financial report presents fairly the transactions of the Castlemaine Community House Inc.

The financial report has been prepared for distribution to members and to fulfil the reporting requirements of the Castlemaine Community House Inc. in accordance with the Associations Incorporation Act and its constitution. Attached find statements of Profit and Loss, Balance Sheet and Cash Flows. The statements are prepared on a cash accounting basis.

We disclaim any assumption of responsibility for any reliance on this report or on the financial report to which it relates, to any person other than the members of Castlemaine Community House Inc. or for any purpose other than that for which it was prepared.

Audit opinion

In our opinion the financial statements within the audit scope detailed above present a true and fair view of the financial position of the Castlemaine Community House Inc. for the period 1 July 2012 to 30 June 2013.

Eckhard Goers
Partner

19 November 2013

BENDIGO: 63 Midland Highway
Epsom Vic 3551
Telephone: 5448 3980
Facsimile: 5448 4410
POSTAL ADDRESS: PO BOX 99
EPSOM Vic 3551

web:goersandmaunder.com.au

CASTLEMAINE: Office 3, Level 1
Geo. Clarke Place
203/205 Barker Street
Castlemaine Vic 3450
Telephone: 5470 6565
Facsimile: 5470 6565

Email: goers@netcon.net.au

financial statements

Castlemaine Community House Inc Profit & Loss July 2012 through June 2013

	Jul 12 - Jun 13
Income	
Payroll Subsidy	5,454.54
General Income	
Aquitted Classes	0.00
Catering	28,074.21
FFS Course/Workshop Fees	13,072.03
Funded Course/Workshop Fees	4,560.00
Fundraising	7,481.96
Fundraising - Spring Ball	10,300.92
Gifts & Donations	4,343.20
Interest Received	7,266.78
Membership Fees	185.64
Operating Income	62.98
Rental Income	5,366.25
Sales Income - CSC Canteens	84,953.49
Services Income	8,724.45
Total General Income	174,391.91
Grants Income	
Grants - Non Recurrent	
ACFE	16,769.20
Non ACFE	277,711.69
Total Grants - Non Recurrent	294,480.89
Grants - Recurrent	
ACFE	
Delivery - ACFE	3,451.00
Equipment - ACFE	4,000.00
SR Pre Accredited - ACFE	928.00
Total ACFE	8,379.00
DHS	5,490.77
DPCD	59,150.64
Stronger Families	2,750.00
Total Grants - Recurrent	75,770.41
Total Grants Income	370,251.30
Total Income	550,097.75
Gross Profit	550,097.75
Expense	
Administration	
Accommodation	
Cleaning	331.00
Electricity & Gas	2,456.38
Rent	12,434.00
Repairs & Maintenance	825.10
Total Accommodation	16,046.48
Administrative	
Admin Grant Expense	34,731.18
Admin Grant Income Recovered	-35,577.59
Admin Recovery	0.00
AGM Expenses	1,281.82
Auditor Fees	1,100.00
Bank Charges	453.25
Catering	27,208.51
Insurances	593.28
Permits, Licences & Fees	1,404.84
Postage	273.14
Stationery	3,981.80
Subscriptions & Memberships	125.00
Telephone & Communications	4,738.94
Total Administrative	40,314.17
Total Administration	56,360.65

financial statements

Castlemaine Community House Inc Profit & Loss July 2012 through June 2013

	Jul 12 - Jun 13
Holding Funds Auspiced Grant e)	
Auspice - Lot 15	4,360.00
Total Holding Funds Auspiced Grant e)	4,360.00
Operational	
Facilities & Equipment	
Computer & Software Expenses	1,262.08
Depreciation	7,265.00
Expensed Equipment	1,644.78
Total Facilities & Equipment	10,171.86
General	
Advertising & Sponsorship	2,615.01
Conferences, Seminars	2,970.95
Health & Safety	621.75
Materials	2,227.18
Photocopying & Printing	677.86
Rebate for NILS clients	60.00
Room Hire	1,700.90
Staff Amenities	3,192.34
Staff Training	1,544.59
Stock Purchases - CSC Canteens	39,681.74
Travel & Accommodation	515.27
Workcover	2,177.11
Total General	57,984.70
Total Operational	68,156.56
Other	
Donations	250.00
Spring Ball Expenses	7,027.09
Total Other	7,277.09
Payments to Other Associated Pt	
Consultancy Fees	7,291.42
Contractor Fees	9,387.92
Contractor Fees - Unfunded	10,807.81
Tutor Fees	21,381.02
Total Payments to Other Associated Pt	48,868.17
PAYROLL EXPENSES	
Superannuation	
*Payroll Expenses	1,705.22
Superannuation Funded	19,064.86
Total Superannuation	20,770.08
Wages	
Wages Funded	252,136.54
Wages Unfunded	2,039.44
Total Wages	254,175.98
Total PAYROLL EXPENSES	274,946.06
Refund Unexpended Grants	11,056.49
Uncategorised Expenses	0.00
Total Expense	471,025.02
Net Income	79,072.73

Handwritten signature and date 19/11/13

Handwritten signature and date 19/11/13

financial statements

Castlemaine Community House Inc Balance Sheet As of June 30, 2013

	Jun 30, 13
ASSETS	
Current Assets	
Chequing/Savings	
CSB - Cash Management Account	156,820.91
BBL - CSC Canteen A/C	21,367.09
BBL - LONG SERVICE LEAVE	12,178.37
Petty Cash - CCH	396.75
Petty Cash- CSC Canteens	250.00
Petty Cash -Community Lunch	100.00
Cash Clearing & Floats	57.00
Term Deposit	89,694.88
Total Chequing/Savings	280,865.00
Other Current Assets	
Advance	1,000.00
Bonds- Premises Rental	1,032.00
Inventory Asset	153.60
Total Other Current Assets	2,185.60
Total Current Assets	283,050.60
Fixed Assets	
OFFICE FURNITURE & EQUIPMENT	
Office Furn & Equip at Cost	29,918.32
Office Furn & Equip less Dep	-23,227.00
Total OFFICE FURNITURE & EQUIPME...	6,691.32
PLANT & EQUIPMENT CONTROL	
Plant & Equipment at Cost	43,093.66
Plant & Equipment less Acc Dep	-29,662.00
Total PLANT & EQUIPMENT CONTROL	13,431.66
Total Fixed Assets	20,122.98
TOTAL ASSETS	303,173.58
LIABILITIES	
Current Liabilities	
Accounts Payable	
Accounts Payable	0.10
Total Accounts Payable	0.10
Other Current Liabilities	
PAYROLL LIABILITIES	
Payroll PAYG Summary	
PAYG Paid	-38,380.00
PAYG Tax	50,426.09
Total Payroll PAYG Summary	12,046.09
Super Liability	
*Payroll Liabilities	1,705.22
Super Liability - Other	-1,907.99
Total Super Liability	-202.77
Total PAYROLL LIABILITIES	11,843.32
Tax Payable	9,519.66
Total Other Current Liabilities	21,362.98
Total Current Liabilities	21,363.08
Long Term Liabilities	
Provision Long Service Leave	1,786.13
Sick Leave	10,000.00
Total Long Term Liabilities	11,786.13
TOTAL LIABILITIES	33,149.21
NET ASSETS	270,024.37

financial statements

Castlemaine Community House Inc Balance Sheet As of June 30, 2013

	Jun 30, 13
EQUITY	
Retained Earnings	190,951.64
Net Income	79,072.73
TOTAL EQUITY	270,024.37

[Signature]
19/11/13

Castlemaine Community House Inc Statement of Cash Flows July 2012 through June 2013

	Jul 12 - Jun 13
OPERATING ACTIVITIES	
Net Income	38,132.21
Adjustments to reconcile Net Income to net cash provided by operations	
Accounts Receivable	16,208.03
Accounts Payable	27,619.74
PAYROLL LIABILITIES: Payroll PAYG Summary: PAY..	-24,654.00
PAYROLL LIABILITIES: Payroll PAYG Summary: PAY..	33,642.09
PAYROLL LIABILITIES: Super Liability	-1,907.99
PAYROLL LIABILITIES: Super Liability: *Payroll Liabilit..	1,705.22
Tax Payable	2,191.84
Net cash provided by Operating Activities	92,937.14
INVESTING ACTIVITIES	
OFFICE FURNITURE & EQUIPMENT: Office Furn & Equip..	-1,292.73
OFFICE FURNITURE & EQUIPMENT: Office Furn & Equip..	3,846.00
PLANT & EQUIPMENT CONTROL: Plant & Equipment at ..	-1,315.38
PLANT & EQUIPMENT CONTROL: Plant & Equipment les..	3,419.00
Net cash provided by Investing Activities	4,656.89
Net cash increase for period	97,594.03
Cash at beginning of period	183,270.97
Cash at end of period	280,865.00

[Signature]
19/11/13