

**CASTLEMAINE
COMMUNITY
HOUSE**

Your Community House...



**2023-2024
Annual Report**



Contents

History 1

About CCH 2

Farewell Martyn 3

Chair's Report 4

EO Report 6

Treasurer's Report 7

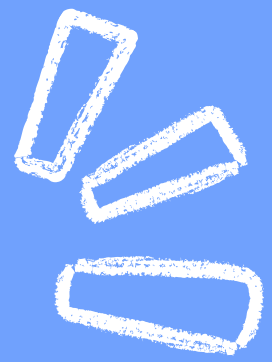
Learn Local 9

Community Development 10

Programs and Partnerships 16

Financial & Auditor's Report 2023-24 19

CCH History



In the 1970s, Neighbourhood Houses began emerging across Victoria, and the Castlemaine community actively campaigned for one in their area. Castlemaine Community House was officially established in 1985, supported by a \$3,255 community grant from Family and Community Services. Initially called the Castlemaine Community Drop-In Centre, its mission was to "provide an easily accessible meeting point for all people in the local or broader Castlemaine area."

Since opening its doors to the public on 4 July 1985, Castlemaine Community House has grown significantly, offering a wide range of programs and services. It also remains actively engaged in the growth of Neighbourhood Houses across Victoria and the region through its affiliations with Neighbourhood House Victoria and the Loddon Mallee-based Regional Association of Neighbourhood & Community Houses (RANCH).



Castlemaine Community House acknowledges & pays its respects to the Dja Dja Wurrung people, Traditional Custodians of this land, and to their Elders, past and present. CCH has been operating on beautiful Djaara Country for almost 40 years. We acknowledge Uncle Rick Nelson and Aunty Kerri Douglas for their leadership and guidance. We also acknowledge the amazing young people in our community who we already have so much to learn from. This land has never been ceded.

About CCH

Castlemaine Community House undertakes community development, service delivery, lifelong learning and advocacy to develop and promote an inclusive, diverse, equitable, healthy and sustainable community.

Committee of Management

Toby Heydon
Chair

Ron Moore
Vice-Chair

Bronwen Machin
Treasurer

Rani Kerin
Secretary

Janet Phillips
Ordinary Member

Bron Grieve
Ordinary Member

Geoff Nunn
Ordinary Member

Staff

Mahira Sobral
Executive Officer

Kerrily Jennings
*Community Development
Manager*

Kelsey Docherty
Office Manager

Isis Jordan
Get Connected Link Worker

Julie Holden, Rhonda Jury,
Kerrily Flanagan
Services Australia Agents

Our volunteers play a vital role across many of our programs, including Castlemaine Pride, Community Lunch, Christmas Lunch, reception and customer service, gardening, education, and our volunteer Community of Management. Their invaluable contributions enable us to deliver essential services and programs that benefit our community.

A special thanks to Peter Nunn, who retired in early 2024 after volunteering for over 7 years in reception alongside Kelsey, our Office Manager. Peter's warm and friendly nature, along with his constant willingness to lend a hand, made him an essential part of creating a welcoming atmosphere at Community House for everyone who walked through our doors.

We couldn't do what we do without the commitment of volunteers like Peter and all those who support us.

Farewell to Martyn!



In December 2023 we farewelled Martyn Shaddick, after 10 years as the manager of Castlemaine Community House.

Martyn came onboard in April 2013, joining a small team of volunteers and staff, located in the Faulder Watson Hall. In just over 10 years leading CCH, Martyn guided our community house through two major relocations (first to 65 Templeton Street and then to 30 Templeton Street), a pandemic, and helped transform it into the incredible community hub it is today.

Martyn championed the expansion of key roles at CCH, most significantly the establishment of an almost full-time Office Manager role (Kelsey!), underpinning all operations at CCH. Another of Martyn's legacies is the amazing, ever-growing annual event that is Castlemaine Pride. What began as a picnic in 2018 has blossomed into a two-week-long festival featuring over 20 events and a leading LGBTQIA+ program in Castlemaine!

We extend a heartfelt thanks to Martyn, for his leadership, compassion and stories stories, stories, and look forward to continuing to building upon the strength he added to the foundations laid by his also fabulous predecessors.





Chair's Report

In last year's Annual Report, I noted that the Castlemaine Community House was in the process of adapting and changing so that we could continue to operate as a key hub and neighbourhood centre for Castlemaine and district. We reported that we faced financial challenges but that we were heartened by gradual increases in enrolments in our courses; we were also encouraged by the number and variety of programs and organisations we were supporting. This year, I am pleased to report that these trends are continuing, and we are confident that we are addressing the most serious challenges of the post-covid economic environment and that we hope to maintain the continued growth of the House and improvements to our financial position. Thank you to our indefatigable Treasurer, Bronwen Machin, who has worked so hard to help steer us through these difficult economic times.

Last December, we bid farewell to our long-standing Manager, Martyn Shaddick. We extend our heartfelt thanks to Martyn for his 10 years of leadership, dedication and service to the Community House. His work has left a lasting legacy, with many of the programs he initiated continuing to make a meaningful impact in our community today.

We were very fortunate to appoint Mahira Sobral as our new Executive Officer in April. Mahira brings a wealth of experience and knowledge to the role, having served in a range of positions at the much larger Bridge Darebin Neighbourhood House in northern Melbourne. She has brought exciting energy to the House and has settled in very well to the manager's role. Her new ideas and positive outlook are essential for us now. Of course, I could not be writing this, noting our growth and development through 2024, without the critical hard-working and enthusiastic commitment of our key staff, Kelsey, Kez, Julie, Isis, Rhonda and Kirrily. Our volunteers remain crucial to our survival and success, and it was with some sadness that Peter retired this year. Huge thanks to you, Pete.

We also could not continue to serve our community without the ongoing care and support from the three tiers of government. Mount Alexander Shire Council continues to support the House in many ways, not least in helping with the weekly Community Lunch that we host at the Castlemaine Town Hall and the hugely popular Christmas Day lunch. Lisa Chesters, federal member for Bendigo, is another key ally and defender who provides advocacy and support as we negotiate with Services Australia and other federal government departments throughout the year. We are fortunate to have such keen and sympathetic local MPs and representatives.

Last year we noted the difficulties faced by many in our community as a result of the rapidly increasing cost of living. While we have just recently started to see some easing in the national rate of inflation, many in our town and Shire continue to face very real and immediate hardship in meeting everyday costs and expenses. As a community hub for people from a very wide range of demographic and socio-economic backgrounds, we are confronted daily with increasing demands for key essential goods and services to help people with ordinary household support.

Our Community Lunch provides many in Castlemaine and district with a delicious and nutritious vegetarian meal on Tuesdays (during school terms) as well as a convivial and social event to connect with each other and to make new friends. With many people moving to the Shire, sometimes with limited social connections here, community lunches are an important way that people can connect. Welcome, Duang, our new chef, who has joined us permanently, and thanks so much, JP, for all your work and lovely food for the past few years. CCH is also working with other food and meals providers to better market such services and events and to increase the awareness of the many meals and other material supports available in the Shire.





Last year we commenced offering a no-charge and anonymous Food Bank to help anyone who is struggling to put food on the table. This includes fresh as well as non-perishable items and has now expanded to include other essential household goods, like cleaning products and toiletries, for example. Demand for this food pantry increases month-on-month, as do requests for other essential goods and services.

Thanks to our wonderful volunteers, we continue to offer the No Interest Loans Scheme (NILS), a very important service for our community, along with Free Tax Help. Providing access to such essential goods and services marks an important shift in focus for Castlemaine Community House as so many of our Shire residents face privation and want that a few years ago was more limited. Whilst our annual subscription to Food Bank provides many of the goods, we are also able to stock our food pantry through fresh food made available through Growing Abundance.

Another way that the House is growing and changing is by focusing more on ways that we can help connect people with each other and with services and events in our Shire. We have been fortunate to lead a group of organisations, including Dhelkaya Health and Goldfields Medical Group, with a social prescribing program across the Shire that helps connect residents with medical services, community groups and organisations and local programs and events. Social prescribing is another way that we can team up with other organisations to better serve the health and wellbeing of the community.

As well as the various ways that the House is expanding the kinds of essential supports we provide, we remain committed to the core programs we offer in-house, like the wide range of excellent courses we run for vocational and creative purposes as well as personal and community interest. We also remain staunch supporters of the various organisations and programs that we host from our Templeton Street home. These include the Castlemaine Pride, Mount Alexander Shire Disability Advocacy Group (MASDAG), the Positive Ageing Advocacy Group (PAAG), Mondo Lounge, Murnong Mummas Aboriginal Catering Enterprise, My Home Network, Castlemaine Women's Shed, Castlemaine Safe Space and more. We acknowledge and thank all of those who staff these organisations and programs. We are very happy to share our building with Nalderun Education Aboriginal Corporation, an important First Nations organisation in this beautiful part of Djaara Country.

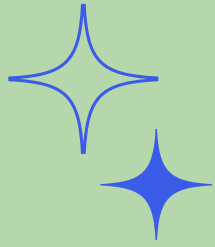
The 2023 Spring Ball was, as ever, a huge event and focal date on Castlemaine's social calendar, and we are, again, indebted to Rani and the whole Spring Ball team for organising this wonderful night at the Town Hall. The theme was The Glamorous Life, featuring Meg Corson's Disco Panic and local DJs from MainFM. The costumes were amazing, the prizes brilliant, the food delicious. Thank you everyone for coming along and supporting this, our principal fundraiser.

It is a humbling exercise to write this Chairperson's Report again, as I reflect on all the amazing work that the Castlemaine Community House performs each year, and as I consider all the generous and talented people who commit so much time and energy to making our community even better. But the biggest thanks goes to you – the members of CCH and the wider Castlemaine and district community – for standing with us and supporting us as we try our best to do our duty to our wonderful town.

Thank you!
Toby Heydon
Chair



Executive Officer's Report



As the new Executive Officer of Castlemaine Community House, I'm inspired by the warm, inclusive culture and the incredible dedication of our staff, volunteers, and partners who bring our programs to life. From the No Interest Loans Scheme to the Get Connected program, our team is committed to making CCH a place where every community member feels valued, supported, and connected to the resources they need.

I'm grateful for the foundation built by my predecessors, particularly Martyn Shaddick, who led CCH for 10 years before his resignation in December 2023. Martyn was a dynamic presence in the community, known for his humour and unwavering commitment to community development. He established several impactful initiatives that continue to benefit the Castlemaine community today, including our food pantry, the Castlemaine Pride festival, and the Age-Friendly Community Projects pilot, which developed programs to address social isolation and promote health and wellbeing.

These initiatives laid the foundation for our current Get Connected social prescribing program, which partners with local health providers to connect community members experiencing social isolation with supportive programs at CCH. Martyn left big shoes to fill, and I'm committed to carrying forward his legacy of deep care, passion for meaningful change, and a can-do spirit.

I'd also like to acknowledge Greg Ferrington, who served as interim manager before I took over the role in April 2024. Greg brought a wealth of sector experience along with fresh perspectives, positive energy, and strategic insight during this important transition period.

Looking ahead, I'm excited to focus on expanding our educational and community programs with plans to introduce new workshops and events that inspire learning and connection. We're exploring opportunities in areas like digital literacy, creative industries and programs to welcome new residents to Castlemaine and celebrate multicultural community members, ensuring everyone feels supported and included in our community.

We continue to face financial challenges stemming from the pandemic and rising costs. Securing CCH's future is a top priority, and we're tackling this through a new strategic plan focused on sustainable funding. Like many in the not-for-profit sector, we're navigating a shifting funding landscape and tighter state budgets. As noted in our Treasurer's report, we're working hard to diversify our income and build partnerships that unlock new opportunities.

As we work to strengthen our financial position, my hope is to build a solid foundation that enables us to take thoughtful risks, launch new initiatives, and expand existing programs, all with the goal of better supporting the needs of our community.

Thank you to all the community members, staff, volunteers, our Committee of Management, and partners who have supported me as I've settled into the Executive Officer role. I'm excited to continue working together to create a positive impact and support a healthy, inclusive, and sustainable Castlemaine.

Treasurer's Report

After an expensive year, it is not surprising that CCH made a loss. This year the loss is \$54,145 which is an improvement on the previous year's loss of \$83,919.

Some additional expenses that led to our loss this year include:

- payment for a Locum Interim Manager and financial support from Neighbourhood Houses Victoria after Martyn Shaddick resigned in December 2023 and before Mahira Sobral was appointed in April 2024
- paying Martyn Shaddick his entitlements when he resigned
- our Services Australia contract for us to provide Centrelink does not cover the salary of overheads of providing that service by about \$10,000; advocacy is continuing to address this discrepancy.
- reduction in enrolments across our education programs.

Significant effort has now been put into reversing the losses. Changes include:

- diversifying income streams through significant increase in partnership work, which is leading to more educational offerings and the delivery of fee for service bespoke training programs
- increasing venue hirers
- adjusting fee structures and salaries for our training programs to align with industry standards
- reducing staff expenses through consolidating roles and redistributing staffing resources
- partnering with MAS Council to join their bulk buy solar energy program to source renewable electricity
- reducing expenses in program delivery, trying to use existing resources and materials as much as possible.

In addition, CCH is seeking DGR status, which will enable donations to be tax deductible.

Our new Executive Officer, Mahira Sobral, has been instrumental in leading these changes and the Committee of Management is very grateful for her expertise, her leadership and her capacity to take on and resolve difficult issues. She has undertaken this work while maintaining a supportive culture. We also thank our staff and volunteers who have been through significant changes and who continue to provide the Castlemaine community greatly needs.

Castlemaine Community House continues to receive significant financial support from the state government, for which we are very grateful. It provides program funding to support the employment of our Executive Officer plus funding of most of our educational programs through the Adult, Community and Further Education Board.

Thanks to the Mount Alexander Shire Council for their continued support in providing the Town hall for Community Lunch and other events and for their annual contribution of \$5,000 plus additional support for Community Lunch and Food Links project this year, totaling to \$38,403.26.

The Committee of Management is confident that the continued losses have now been curtailed. However, there will be some years ahead of striving to increase our income through grants, more educational offerings and fundraising before we will consider ourselves on a sound financial footing.

Bronwen Machin
Treasurer



Funders, Donors, Supporters

Thank you!

GENERAL OPERATIONS AND MULTI-PROGRAM

Mount Alexander Shire Council
Department of Families, Fairness and Housing
Department of Jobs, Skills, Industry and Regions
Services Australia
Adult Community Further Education
Jellis Craig
Lisa Chesters
Are-Able
Neighbourhood Houses Victoria
Good Shepherd No Interest Loans
Shedshaker Keg for Good
City of Greater Bendigo
Cantwell Real Estate

FOOD PROGRAMS AND PANTRY:

Mt Alexander Community Enterprise
Commonwealth Bank
Phoenix Chewton CWA
Harcourt CWA
Rotary Castlemaine
Moon Massage
Bakers Delight
Maxi IGA
Castlemaine IGA
Rapid Relief Australia
Growing Abundance

CASTLEMAINE PRIDE:

Dhelkaya Health
Shedshaker
Green Goes the Grocer
Grainger legal
Grist Bakery
Fossey Gin
Real Strength



And, of course, the kind, generous and supportive community of Mount Alexander Shire residents. Your continual contributions of time, energy, food, cash and care mean the world to us, and the community you share with through us.

We truly are YOUR Community House.



Learn Local

Skills for study, work and life



This year, 2023-24 saw enrolments in courses and workshops gradually rise toward pre-pandemic numbers, as the community's confidence to reengage with activities slowly returned. It has been heartwarming, encouraging and reassuring to see our spaces all buzzing with activity again, as teachers and students fill rooms across mornings, afternoons and evenings.

It's wonderful to have student art exhibitions happening as part of our arts courses again, and note the ongoing love and demand for the ever popular Art Pathways course. We've been excited to add new courses to our suite of learning opportunities, such as AI Tools for Business, Microbusiness for Makers, Intro to Canva, and Machine Sewing for Beginners. Along with new courses, we've also extended to offer courses in new locations, most significantly in our partnership with Mill House Neighbourhood House in Maryborough. This collaboration highlights the important impact NHs offer communities, as we seek to work together, increasing capacity to address community needs by sharing our resources.

The Mount Alexander Shire Employment, Education and Training Network also continued to expand and strengthen network participants connections, understanding of local client/participant needs / challenges / opportunities, and sharing of resources. An example of this was the 'Coffee With The Boss' activity, supported by Workforce Australia and Bendigo Tourism Board, which connected local hospitality employers and job seekers for a coffee, a chat, and potential work opportunities.

As the backbone of our operational funding and activities, being a Learn Local is core to much of what we do at CCH. It's also an important connection point with our community, providing diverse reasons for people to come, discover, connect and adopt Castlemaine Community House as part of their own community world.



Community Lunch ✨

This financial year, our weekly Community Lunch returned to its pre-COVID numbers and vibe. When our fantastic Kitchen Coordinator of over two years, JP, announced he was moving, we were concerned about finding the right person to fill his shoes. However, we couldn't have been more delighted when the big spoon was passed on to the fabulous Duang. Since Duang joined the Community Lunch team, attendance has continued to grow, with people flocking in for the delicious food, welcoming vibe, and the strong sense of community that Duang and the amazing team of volunteers bring to every meal.

We love that Community Lunch has returned to, and continues to be, a beautiful point of connection in each week. It's also particularly buoying to notice the number of younger people, children and new residents joining us to share a meal and connect with their community. It's a joy to witness how our community 'owns' the Community Lunch, with many valuing it as an integral part of their social calendar.



Community Christmas Lunch

In 2023 we hosted our third, and largest, Community Christmas Lunch, with over 260 meals served to community on Christmas Day. This year our goals were to broaden our community reach, promote access to mental health supports over summer, and ensure everyone has access to an affordable Christmas celebration. Feedback received during and after the lunch spoke loudly of how well we achieved these goals.

The Community Christmas Lunch brings so much joy to so many, starting with the incredible working group team (Mel from MASC, Jez from HALT, Liza from Dhelkaya, Rosie Annear, and myself, Kez), as we truly love creating this event together. Next, the volunteers who become part of the event, with people coming in to decorate the hall, wrap gifts, prep food, all well before Christmas Day. And then even more fabulous volunteers on the day!

In 2023 we had over 50 people volunteer for Community Christmas Lunch, just amazing, and thank you all. Then, on Christmas Day we had well over 200 people sit down and enjoy a delicious, joyous lunch together, thank you all for being part of this.

And watch out for the 2024 Community Christmas Lunch, as the working group is never content to simply recreate what was done the year before but always strive to reach more people, support more community, and increase connections on this day that can be challenging for many.



Food Links & Food Pantry

Food Links began in 2021, as a project addressing food security in MAS by strengthening networks of local community gardens, food relief services and food producers.

With funding from Healthy Loddon Campaspe, the Food Links program continued throughout the 2023-24 financial year. During this time, we hosted numerous events to engage the community around the theme of local food systems. Guided by community input, we established Food Links Pantries across the shire, including at the Maldon Food Pantry, Chewton Service Station, Harcourt Valley Community House, and Newstead Rural Transaction Centre.

Our Food Links Project Officers, Josie and Quin, worked tirelessly to ensure these connections were strong, sustainable, and ongoing, providing vital points for the distribution of free fresh produce across our Shire. The project also strengthened our partnership with the Growing Abundance Project, whose Harvest program helped source and distribute fresh produce to the Food Pantries.



Thea from Growing Abundance dropping off fresh apples to Maldon Food Pantry



Other groups we support

As part of our commitment to fostering a vibrant and resilient community, we proudly auspice and support a range of local groups, providing them with the resources and infrastructure they need to thrive. By offering administrative support for funding or access to our facilities, our aim is to empower these community-led organisations to build on the incredible work they are already doing, enhancing their capacity to make a positive impact and contribute to a stronger, more connected community.

Waaman Inc
D-tour silent disco
The Art of Grieving Workshop Series
Castlemaine Women's Shed and surrounds
Mount Alexander Shire Disability Advocacy Group
Nalderun Education Aboriginal Corporation

Central Victorian Clay Trail
Run with Inez - Motivational Running
Repair Cafe
Mount Alexander Sustainability Group
Bent Brushes
My Home Network

Spring Ball



The Town Hall shone with waterfalls of fairy lights and glittering orbs; moving images of sartorial splendour flickered across its vast walls and ceiling. A chandelier hung over the bar. Then the ball-goers arrived, gliding across the red carpet to enter ‘The Glamorous Life’ Spring Ball, CCH’s biggest annual fundraiser. Some people caught the ‘Disco Train’, a silent-disco journey through the streets of Castlemaine that ended at the Town Hall.

DJ Toby Heydon set the mood early on, with classic dance hits that got people moving and grooving, aided by a flash mob–style performance from Isis Jordan and her dance crew. The band, Meg Corson’s Disco Panic, was amazing, as were the MCs, Theresa and Briega. Supper was served half-way through the night. Keepsake memories were made in the photobooth, generously sponsored by Cantwell Real Estate. Roving photographer, Leonie van Eyk, captured all the special and spectacular moments, including the best-dressed parade judged by Audra and Nic. DJs Sach McTee and Jen Moore finished off a brilliant night.

Behind the scenes, in the kitchen and bar, swarms of volunteers (I like to think of them as kitchen fairies) worked to make everything run smoothly. Planning for the Spring Ball started months before the event, and the weeks and days leading up to it were full of frenetic activity. As I write this report, Spring Ball 2024 is just days away, and I’m reminded—not that I need reminding—of how special this community is: offers of help are flying in left and right and the buzz is building to what will surely be another amazing night!

Special thanks to the 2023 Spring Ball Organising Committee: Jo Bodno, Nicole Trench, Hywel Stoakes, Zoe Dattner, Liza Shaw, Georgina Heydon, and all the helpers on the night! Thanks also to our very generous sponsors and supporters: Cantwell, Ford Dairy, Green Goes the Grocer, Harcourt Valley Wines, Harvest Shop, Little Red Apple, Maxi IGA, Merchants of Mostyn, Opus Belle, ShedShaker, Wesley Hill Bakery.

Rani Kerin
Spring Ball Organising Committee

Harmony Day

Our "World on a Plate" event was a smashing success!

Together we explored the flavours of Spain and Argentina, learnt the art of making sushi, prepared Chinese dim sum and discovered the secrets of crafting Gado Gado.

Delicious food, joyful dancing, and amazing community spirit made for an unforgettable evening!

Thank you to all who came along to celebrate cultural diversity, and inspiring us to work on hosting more multicultural events in our community.



Murnong Mummas



Morchella australiana | Ira Barker, 2023

Exploring new avenues for connecting community with Indigenous bushfoods, Murnong Mummas expanded their catering and farm operations to include education. This led to exciting programs with schools, council and young people, and the creation of a suite of beautiful cards by artist and farmer, Ira Barker, with hand drawn illustrations of bush foods, accompanied by information and methods of using them. Ira was also successful in applying to attend the National Sovereign Food and Botanical Symposium in Larika Country in 2023.

This was also an exciting time for Murnong Mummas staff member, Bronwyn, as she was offered an opportunity to cater for a large group of students, during a program in Arnhem Land. Murnong Mummas and CCH were thrilled to see Bronwyn take her MM skills and apply them in another work setting, continuing to educate and inspire young people about Indigenous bush tucker.

Get Connected - Social Prescribing Mount Alexander

Led by the fabulous Isis Jordan, our social prescribing project, Get Connected, has received over 50 referrals for members of the community experiencing social isolation and/or loneliness. 57% of participants referred to Get Connected engaged in a social activity, either via attending the Chatty Café, participating in community groups, or meeting for a one-on-one cuppa and chat session with a Community Connector. Activities and clubs that participants have connected into include a snooker club, the U3A, music and movies at the Northern Arts Hotel, a biographer, Probus, Men's Shed, and various art classes.

Multiple friendships groups have naturally grown from the weekly Chatty Café, and participants have initiated various new interest groups. A backgammon club was initiated out of the interest of a participant to play backgammon, and another participant started a weekly movie outing at the local cinema, as well as a monthly free public viewing of a movie at the Castlemaine Community House. A mahjong group was initiated by two participants who wanted to learn mahjong.

Participants described their involvement in the Get Connected program as having a range of positive impacts in increasing their social connection. Participants were strongly appreciative of the support and encouragement given by the Community Connectors, and the program's person-centred approach. Most participants reported Get Connected offered timely support and many participants reported benefits from attending even a few sessions with the Community Connectors, the Chatty Café or other programs and groups. Furthermore, referrers who had regular contact with program participants were observing positive outcomes for their clients and patients.

The Get Connected program meets critical needs in the community where some people are socially isolated and lonely, and this can contribute to poor mental health.

"The Chatty Café is a great experience. I've met people and we talk about different things; I just like talking to people and listening to their stories and I really missed this [because] I don't know a lot of people in Castlemaine, although I've lived there for 20 years!"

"I moved to Castlemaine recently and underestimated the impact of not having friends in the town... and it took me into a depression... [Get Connected] was like a great big hug ... it's hard when you're older to meet people. I would say it's had a big impact on me and [without it] I would have been a bit lost"





Castlemaine Pride



Castlemaine Pride is a volunteer-led community group that organises the festival each year. It all began in 2018 when Martyn Shaddick, Sherene Clow and Marion Yates organised a Pride Picnic – an act of healing after the dark days of the marriage equality debate and a thank-you to all those who supported the Queer community. From this humble origin, Castlemaine Pride has grown into a week-long celebration of the culture, history, creativity and determination of the LGBTQIA+ community in Mount Alexander.

This year's Castlemaine Pride was a big success thanks to the work that the Castlemaine Pride Committee and Castlemaine Community House's participation in hosting the program of events.

The Committee was successful in securing two grants this financial year, the first from the Victorian Government that helped with Governance of the Committee and saw Kate Phillips engaged to create a community survey to see what the LGBTQIA+ community wanted from Castlemaine Pride and it's Committee. This was in conjunction with consultations and, after many months of work, a report was created to guide the next steps of the festival moving forward.

The Pride Events and Festivals Fund helped us deliver a live performance from living legend and former local Stan Munro as he performed his one man show Vintage Drag in Mint Condition at the Theatre Royal in front of an audience of 110 people.

The Castlemaine Pride festival has grown significantly since the first gathering in 2018, with over 14 events hosted in the 2023 festival and more than 20 in the 2024 festival. Our flagship Pride Picnic draws over a thousand attendees each festival, bringing together community members and allies of all ages.

Programs, Sustainable Development

The Sustainable Development Goals (SDGs) are a set of 17 global objectives established by the United Nations in 2015 to address pressing social, economic, and environmental challenges by 2030. They aim to promote prosperity, equity, and sustainability worldwide, covering critical areas such as poverty reduction, quality education, health, clean energy, and climate action. These goals are deeply intertwined with community development, as they focus on empowering local communities to build resilient economies, improve quality of life, and preserve natural resources.

Community focus	SDGs	Program	Partnerships	Funding
First Nations	3, 5, 10	Murnong Mummas	CCH program	Adult Community Further Education Self-generated revenue from catering and education programs
Community Connections AND Health & Wellbeing	2, 3, 10, 11	Community Lunch	Mount Alexander Shire Council (MASC)	Mount Alexander Shire Council Jellis Craig Central Victoria Lisa Chesters Community donations
Community Connections AND Health & Wellbeing	2, 3, 5, 10, 12, 17	Community Christmas Lunch	MASC Dhelkaya Health	Mt ACE & Rotary MASC & HALT Community donations
Community Connections	3, 10, 17	World in a Bowl - Soup at CDOC	CDOC	Fundraising for food pantry
Community Connections AND Health & Wellbeing	3	Qigong & Yoga		Fee for service
Community Connections AND Health & Wellbeing	3, 10, 17	Carer's Support Group	RIAC, MASC, Dhelkaya	No funding
Community Connections AND Health & Wellbeing	2, 3, 10, 17	Food Pantry	Rapid Relief Australia, Growing Abundance Project, Castlemaine Mail	MASC staff, Lisa Chesters, Chewton Phoenix CWA, our generous community
Community Connections AND Health & Wellbeing	2, 3, 10, 17	Help at Hand Map	MASC, Castlemaine Safe Space, Dhelkaya Health	No funding

Goals (SDGs), and Partnerships

Through community-led efforts, the SDGs foster inclusive growth, ensuring that every individual can contribute to and benefit from sustainable development practices tailored to their unique local needs.

This year we are incorporating the SDGs into our Annual Report to reflect the expanse of our work, and as a starting point to better connect CCH with the goals as we move forward.



Community focus	SDGs	Program	Partnerships	Funding
Community Connections AND Health & Wellbeing	3, 10, 11, 12, 13, 15	Community Kitchen Garden	MASC community volunteers	In kind support from CCH MASC -Youth Take Over
Sustainability and Environment	12, 13	Terracycle recycling	Plastic Bag Free Castlemaine	In kind support from CCH
Health and Wellbeing, Community Connections, Sustainability & Environment	2, 3, 10, 11, 12, 13, 17	Food Links	Healthy Loddon Campaspe, Growing Abundance Project	Healthy Loddon Campaspe
Disability, Health & Wellbeing	3, 10, 17	MASDAG (Mount Alexander Disability Advocacy Group)	Auspiced by CCH	MASC
Financial Services	1, 10	Tax Help	Tax Department	No funding
Financial Services	1, 3, 10	Centrelink and Medicare Agency		Services Australia
Financial Services	1, 2, 3, 5, 10,	NILS (No Interest Loan Scheme)	Good Shepherd Microfinance	Good Shepherd Microfinance
Financial Services	1, 3, 5, 10, 17	Financial Counselling	Catholic Care	No funding

Programs, Sustainable Development Goals & Partnerships Continued

Community focus	SDGs	Program	Partnerships	Funding
Financial Services	1, 3, 10	Power Saving Bonus	NHVIC	Victorian State Government
Life Long Learning	3, 4, 5, 10, 17	Learn Local	Maldon NC, Bendigo Kangan TAFE, Permaculture Hub	ACFE (Adult Community Further Education)
Life Long Learning	3, 4, 5, 10, 17	Workshops and programs	Community based tutors, local business	Fee for service
Life Long Learning AND Jobseeker Support	1, 3, 4, 8, 10, 17	Mount Alexander Shire Employment Education and Training Network (MASEETN)	Work Force Australia, WDEA, Asuria, LCMS, MNC, Jobs Victoria, TAFE, MASC, CVGT, Dhelkaya Health	Partly funded by ACFE
Health and Wellbeing	3, 17	Get Connected - Social Prescribing	MASC, Dhelkaya, Goldfields Library, Goldfields Medical, Women's Health Loddon Murray	CV Prevention, People, and Population
Health and Wellbeing	3, 10, 17	Needle Exchange program & Dhelkaya Health Outreach	Dhelkaya Health	No funding
LGBTQIA+	3, 5, 10, 16, 17	Castlemaine Pride	MASC, Dhelkaya, Mount Alexander community	Dept of Premier & Cabinet, community donations
Health and Wellbeing	3, 10	ELM		MASC
Senior Citizens	10	Be Connected	RANCH	Federal gov initiatives
Senior Citizens	3, 10, 17	Senior's Festival	MASC, community	MASC, State Gov
Youth	3, 5, 10, 11, 17	Youth Take Over	MASC GLEN	GLEN MASC
Accessibility	10,	Public Access Computers and Internet		No funding

Financial and Auditor's Report 2023-24

CASTLEMAINE COMMUNITY HOUSE INCORPORATED

ABN 20 112 806 357

**SPECIAL PURPOSE FINANCIAL REPORT
FOR THE YEAR ENDED 30 JUNE 2024**

Financial and Auditor's Report 2023-24

CASTLEMAINE COMMUNITY HOUSE INCORPORATED
ABN 20 112 806 357
COMMITTEE'S REPORT

Your committee members present the special purpose financial report on the entity for the financial year ended 30 June 2024.

Committee Members

The names of committee members throughout the year and at the date of this report are:

Name	Portfolio	Date of Change
Toby Heydon	Chair	
Ron Moore	Vice Chair	From
Bronwen Machin	Treasurer	
Rani Kerin	Secretary	
Geoff Nunn	Ordinary Member	Appointed
Janet Phillips	Ordinary Member	
Bronwyn Grieve	Ordinary Member	

Principal Activities

The principal activities of the entity during the financial year were to provide programs and activities contributing to community development and supporting individuals and groups within the local community..

Significant Changes

No significant changes in the entity's state of affairs occurred during the financial year.

Operating Results

The deficit for the year attributable to the entity amounted to \$59,145 (2023: \$83,847 - deficit).

Significant Changes in State of Affairs

No significant changes in the entity's state of affairs occurred during the financial year.

Financial and Auditor's Report 2023-24

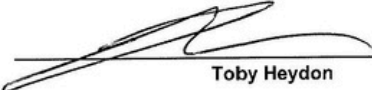
CASTLEMAINE COMMUNITY HOUSE INCORPORATED
ABN 20 112 806 357
COMMITTEE'S REPORT

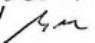
After Balance Date Events


No matter has evolved since 30 June 2024 that has significantly affected, or may significantly affect:
(a) the entity's operations in future financial years, or
(b) the results of those operations in future financial years, or
(c) the entity's state of affairs in future financial years.

Signed in accordance with a resolution of the Members of the Committee.

Chairperson


Toby Heydon

Treasurer
Secretary



Bronwen Machin

Dated this

day of

Financial and Auditor's Report 2023-24

CASTLEMAINE COMMUNITY HOUSE INCORPORATED
ABN 20 112 806 357
STATEMENT OF PROFIT OR LOSS FOR THE YEAR ENDED 30 JUNE 2024

	2024 \$	2023 \$
INCOME		
Adult Community Further Education (ACFE)	144,819	139,803
Department of Family, Fairness and Housing (DFFH)	96,889	93,718
Services Australia (Federal)	70,690	68,634
Mount Alexander Shire Council	28,250	11,424
Course and Program fees	140,361	66,092
Good Shepherd Microfinance	5,000	5,000
Community Lunch	32,350	24,513
Murrmong Mammias Catering	86,523	124,294
Nalderun Aboriginal Services Income	-	52,955
Equipment and room hire	15,236	17,269
Donations and Fundraising	32,000	3,188
Other income and auspices	95,354	192,342
TOTAL INCOME	<u>747,472</u>	<u>799,232</u>
EXPENDITURE		
Staff wages – CCH	328,672	327,078
Nalderun Aboriginal Services Expenses	-	45,000
Education programs	133,736	167,262
No Interest Loans Scheme	108	2,383
Community Lunch	21,696	7,683
Murrmong Mammias Catering	82,283	124,294
Operational expenses	130,746	84,735
Other programs and auspice	109,376	124,716
TOTAL EXPENDITURE	<u>806,617</u>	<u>883,151</u>
NET SURPLUS/(DEFICIT) FOR THE YEAR	<u>(59,145)</u>	<u>(83,919)</u>

CASTLEMAINE COMMUNITY HOUSE INCORPORATED
ABN 20 112 806 357
STATEMENT OF COMPREHENSIVE INCOME FOR THE YEAR ENDED 30 JUNE 2024

	2024 \$	2023 \$
NET SURPLUS/(DEFICIT) FOR THE YEAR	(59,145)	(83,919)
Other Comprehensive Income for the Year	-	-
NET SURPLUS/(DEFICIT) ATTRIBUTABLE TO THE ASSOCIATION	<u>(59,145)</u>	<u>(83,919)</u>

The Statement of Profit or Loss and Statement of Comprehensive Income is to be read in conjunction with the audit report and the notes to the financial statements.

Financial and Auditor's Report 2023-24

CASTLEMAINE COMMUNITY HOUSE INCORPORATED
ABN 20 112 806 357
STATEMENT OF FINANCIAL POSITION AS AT 30 JUNE 2024

	Note	2024 \$	2023 \$
CURRENT ASSETS			
Cash and cash equivalents	2	140,433	248,906
Trade and other receivables	3	3,130	16,090
Current other assets		807	2,954
TOTAL CURRENT ASSETS		144,370	267,950
NON CURRENT ASSETS			
Property, Plant and Equipment	4	-	-
TOTAL NON-CURRENT ASSETS		-	-
TOTAL ASSETS		144,370	267,950
CURRENT LIABILITIES			
Trade and other creditors	5	27,740	29,617
Amounts received in advance	6	40,365	78,915
Provisions	7	26,537	50,545
TOTAL CURRENT LIABILITIES		94,642	159,077
NON-CURRENT LIABILITIES			
Provisions	7	4,894	4,894
TOTAL NON-CURRENT LIABILITIES		4,894	4,894
TOTAL LIABILITIES		99,536	163,971
NET ASSETS		44,834	103,979
EQUITY			
Accumulated funds		44,834	103,979
TOTAL EQUITY		44,834	103,979

The Statement of Financial Position is to be read in conjunction with the audit report and the notes to the financial statements.

Financial and Auditor's Report 2023-24

CASTLEMAINE COMMUNITY HOUSE INCORPORATED
ABN 20 112 806 357
STATEMENT OF CHANGES IN EQUITY FOR THE YEAR ENDED 30 JUNE 2024

	Accumulated funds \$	Total \$
Balance as at 1 June 2022	187,898	187,898
Surplus/ (Deficit) attributable to the Association	(83,919)	(83,919)
Balance as at 30 June 2023	103,979	103,979
Surplus/ (Deficit) attributable to the Association	(59,145)	(59,145)
Balance as at 30 June 2024	44,834	44,834

The statement of changes in equity is to be read in conjunction with the audit report and the notes to the financial statements.

Financial and Auditor's Report 2023-24

CASTLEMAINE COMMUNITY HOUSE INCORPORATED
ABN 20 112 806 357
STATEMENT OF CASH FLOWS FOR THE YEAR ENDED 30 JUNE 2024

	Note	2024 \$	2023 \$
CASH FLOWS FROM OPERATING ACTIVITIES			
Receipts from customers and other sources		721,882	776,889
Payments to employees and suppliers		(830,355)	(881,558)
Interest received		-	2,501
Net cash generated from/(used in) operating activities	(i)	<u>(108,473)</u>	<u>(102,168)</u>
CASH FLOWS FROM INVESTING ACTIVITIES			
Payment for property, plant and equipment		-	-
Proceeds on disposal of property, plant and equipment		-	-
Net cash (used in)/provided by investing activities		<u>-</u>	<u>-</u>
Net increase/(decrease) in cash held		(108,473)	(102,168)
Cash and cash equivalents at beginning of financial year		248,906	351,074
Cash and cash equivalents at end of financial year	(ii)	<u>140,433</u>	<u>248,906</u>

The statement of cash flows is to be read in conjunction with the audit report and the notes to the financial statements.

Financial and Auditor's Report 2023-24

CASTLEMAINE COMMUNITY HOUSE INCORPORATED
ABN 20 112 806 357
NOTES TO THE STATEMENT OF CASH FLOWS FOR THE YEAR ENDED 30 JUNE 2024

	2024	2023
	\$	\$
Note (i). Net cash generated from/(used in) operating activities		
Net surplus/(deficit) attributable to the Association	(59,145)	(83,919)
Non-cash flow item:		
Depreciation	-	6,486
Changes in assets and liabilities:		
- (Increase)/decrease in trade and other debtors	12,960	(6,774)
- (Increase)/decrease in prepayments	2,147	(2,954)
- Increase/(decrease) in trade and other payable	(1,877)	(5,756)
- Increase/(decrease) in amounts received in advance	(38,550)	(13,068)
- Increase/(decrease) in provisions	(24,008)	3,817
	<u><u>(108,473)</u></u>	<u><u>(102,168)</u></u>
Note (ii). Cash and cash equivalents at end of financial year		
Cash at bank	140,233	82,063
Cash on hand	200	3,382
Cash on deposit	-	163,461
	<u><u>140,433</u></u>	<u><u>248,906</u></u>

The statement of cash flows is to be read in conjunction with the audit report and the notes to the financial statements.

Financial and Auditor's Report 2023-24

CASTLEMAINE COMMUNITY HOUSE INCORPORATED
ABN 20 112 806 357
NOTES TO THE FINANCIAL STATEMENTS FOR THE YEAR ENDED 30 JUNE 2024

Note 1. Statement of Significant Accounting Policies

This financial report includes the financial statements and notes of the Castlemaine Community House Incorporated, an incorporated association, which is incorporated in Victoria under the Associations Incorporation Reform Act 2012.

Basis of preparation

This financial report is a special purpose financial report prepared in order to satisfy the financial reporting requirements of the *Australian Charities and Not for Profits Commission Act 2012* and the *Associations Incorporation Reform Act 2012*. The committee has determined that the association is not a reporting entity.

The financial report has been prepared on an accruals accounting basis and is based on historical costs, modified, where applicable, by the measurement at fair value of selected non-current assets, financial assets and financial liabilities.

The following is a summary of the material accounting policies adopted by the company in the preparation of the general purpose financial report. The accounting policies have been consistently applied, unless otherwise stated.

Accounting Policies

a. Cash and Cash Equivalents

Cash and cash equivalents include cash on hand, deposits held at-call with banks, other short-term highly liquid investments with original maturities of three months or less.

b. Income Tax

The Association is exempt from paying income tax by virtue of Sections 50-50 & 50-52 of the *Income Tax Assessment Act 1997*. Accordingly, tax effect accounting has not been adopted.

c. Property, Plant and Equipment

Each class of property, plant and equipment is carried at cost where applicable, less any accumulated depreciation.

Depreciation

The depreciable amount of all property, plant and equipment was depreciated on a straight-line basis over their useful lives to the company commencing from the time the asset is held ready for use.

d. Employee Entitlements

Provision is made for the Association's liability for employee benefits arising from services rendered by employees to the end of the reporting period. Employee benefits have been measured at the amounts expected to be paid when the liability is settled.

Provision is made for the Association's liability for long service leave from commencement of employment, not from the 5 year employment period normally accrued as industry practice.

Financial and Auditor's Report 2023-24

CASTLEMAINE COMMUNITY HOUSE INCORPORATED
ABN 20 112 806 357
NOTES TO THE FINANCIAL STATEMENTS FOR THE YEAR ENDED 30 JUNE 2024

Note 1. Statement of Significant Accounting Policies (continued)

e. Provisions

Provisions are recognised when the Association has a legal or constructive obligation, as a result of past events, for which it is probable that an outflow of economic benefits will result and that outflow can be reliably measured.

Provisions are measured at the best estimate of the amounts required to settle the obligation at the end of the reporting period.

f. Impairment of Assets

At the end of each reporting period, the entity reviews the carrying values of its tangible and intangible assets to determine whether there is an indication that those assets have been impaired. If such an indication exists, the recoverable amount of the asset, being the higher of the asset's fair value less costs to sell and value in use, is compared to the asset's carrying value. Any excess of the asset's carrying value over its recoverable amount is recognised in the income and expenditure statement.

g. Revenue

Revenue is measured at the fair value of the consideration received or receivable.

Revenue is brought to account when received and to the extent that it relates to the subsequent period it is disclosed as a liability.

Grant Income

Grant income received, other than for specific purposes, is brought to account over the period to which the grant relates.

Deferred Income

Unspent grant income received in relation to specific projects and events is not brought to account as revenue in the current year but deferred as a liability in the financial statements until spent for the purpose received.

Capital Grants

Grant Income received relating to the purchase of capital items is shown as Unamortised Capital Grant and brought to account over the expected life of the asset in proportion to the related depreciation charge.

Interest Revenue

Interest revenue is recognised using the effective interest rate method, which for floating rate financial assets is the rate inherent in the instrument.

Donations

Donation income is recognised when the entity obtains control over the funds which is generally at the time of receipt.

All revenue is stated net of the amount of goods and services tax (GST).

h. Comparative Figures

When required by Accounting Standards, comparative figures have been adjusted to conform to changes in presentation for the current financial year.

Financial and Auditor's Report 2023-24

CASTLEMAINE COMMUNITY HOUSE INCORPORATED
ABN 20 112 806 357
NOTES TO THE FINANCIAL STATEMENTS FOR THE YEAR ENDED 30 JUNE 2024

Note 1. Statement of Significant Accounting Policies (*continued*)

i. Goods and Services Tax (GST)

Revenues, expenses and assets are recognised net of the amount of GST, except where the amount of GST incurred is not recoverable from the Australian Taxation Office (ATO). Receivables and payables are stated inclusive of the amount of GST receivable or payable. The net amount of GST recoverable from, or payable to, the ATO is included with other receivables or payables in the assets and liabilities statement.

Financial and Auditor's Report 2023-24

CASTLEMAINE COMMUNITY HOUSE INCORPORATED
 ABN 20 112 806 357
 NOTES TO THE FINANCIAL STATEMENTS FOR THE YEAR ENDED 30 JUNE 2024

	2024 \$	2023 \$
Note 2. Cash and Cash Equivalents		
Cash at bank	140,233	82,063
Cash on hand	200	3,382
Cash on deposit	-	163,461
	<u>140,433</u>	<u>248,906</u>
Note 3. Trade and Other Receivables		
Trade debtors	3,130	16,090
	<u>3,130</u>	<u>16,090</u>
Note 4. Property, Plant and Equipment		
Plant and Equipment		
At cost	43,094	43,094
Less accumulated depreciation	(43,094)	(43,094)
	<u>-</u>	<u>-</u>
Office Furniture		
At cost	53,681	53,681
Less accumulated depreciation	(53,681)	(53,681)
	<u>-</u>	<u>-</u>
Total property, plant and equipment	<u>-</u>	<u>-</u>
Note 5. Trade and Other Payables		
Trade creditors	11,830	5,159
Sundry creditors & accruals	7,609	9,231
PAYGW payable	(1,594)	219
Superannuation payable	8,575	2,623
Net GST payable	1,320	12,385
	<u>27,740</u>	<u>29,617</u>
Note 6. Amounts Received in Advance		
Income received in advance	4,874	-
Murnong Mamas Auspice Funds	30,417	28,120
Other Auspice Funds	5,074	50,795
	<u>40,365</u>	<u>78,915</u>

Financial and Auditor's Report 2023-24

CASTLEMAINE COMMUNITY HOUSE INCORPORATED
ABN 20 112 806 357
NOTES TO THE FINANCIAL STATEMENTS FOR THE YEAR ENDED 30 JUNE 2024

	2024	2023
	\$	\$
Note 7. Provisions		
Current		
Annual leave	19,545	30,398
Long service leave	6,992	20,147
	<u>26,537</u>	<u>50,545</u>
Non-current		
Long service leave	4,894	4,894
	<u>4,894</u>	<u>4,894</u>

Note 8. Related Party Transactions

The Committee Members act in an honorary capacity and are not paid for their services as Committee Members.

There were no transactions with related parties during the 2024 year.

Financial and Auditor's Report 2023-24

TOWARDS A VISION SHARED



**Collins & Co
Audit Pty Ltd**

127 Paisley Street
Footscray VIC 3011
Australia

Phone (03) 9680 1000
Fax (03) 9689 6605

www.collinsco.com.au

Auditor's Responsibilities for the Audit of the Financial Report

My objectives are to obtain reasonable assurance about whether the financial report as a whole is free from material misstatement, whether due to fraud or error, and to issue an auditor's report that includes our opinion. Reasonable assurance is a high level of assurance but is not a guarantee that an audit conducted in accordance with Australian Auditing Standards will always detect a material misstatement when it exists. Misstatements can arise from fraud or error and are considered material if, individually or in the aggregate, they could reasonably be expected to influence the economic decisions of users taken on the basis of the financial report.

As part of an audit in accordance with Australian Auditing Standards, I exercise professional judgement and maintain professional scepticism throughout the audit. I also:

- Identify and assess the risks of material misstatement of the financial report, whether due to fraud or error, design and perform audit procedures responsive to those risks, and obtain audit evidence that is sufficient and appropriate to provide a basis for my opinion. The risk of not detecting a material misstatement resulting from fraud is higher than for one resulting from error, as fraud may involve collusion, forgery, intentional omissions, misrepresentations, or the override of internal control.
- Obtain an understanding of internal control relevant to the audit in order to design audit procedures that are appropriate in the circumstances, but not for the purpose of expressing an opinion on the effectiveness of the registered entity's internal control.
- Evaluate the appropriateness of accounting policies used and the reasonableness of accounting estimates and related disclosures made by the responsible entities.
- Conclude on the appropriateness of the responsible entities use of the going concern basis of accounting and, based on the audit evidence obtained, whether a material uncertainty exists related to events or conditions that may cast significant doubt on the registered entity's ability to continue as a going concern. If I conclude that a material uncertainty exists, I am required to draw attention in my auditor's report to the related disclosures in the financial report or, if such disclosures are inadequate, to modify my opinion. My conclusions are based on the audit evidence obtained up to the date of my auditor's report. However, future events or conditions may cause the registered entity to cease to continue as a going concern.
- Evaluate the overall presentation, structure and content of the financial report, including the disclosures, and whether the financial report represents the underlying transactions and events in a manner that achieves fair presentation.

I communicate with those charged with governance regarding, among other matters, the planned scope and timing of the audit and significant audit findings, including any significant deficiencies in internal controls that I identify during my audit.

Auditor: Frederik Ryk Ludolf Eksteen

ASIC Registration Number: 421448

Address: Collins & Co Audit Pty Ltd, 127 Paisley Street, FOOTSCRAY VIC 3011

Signature:

Date: 19 November 2024

Liability limited by a scheme approved under Professional Standards Legislation

ABN 33 614 161 796


Financial and Auditor's Report 2023-24

CASTLEMAINE COMMUNITY HOUSE INCORPORATED
ABN 20 112 806 357
CERTIFICATE BY MEMBERS OF THE COMMITTEE

I, **Toby Heydon** and I, **Bronwen Machin** hereby certify that:

- (a) We are members of the committee of the Castlemaine Community House Incorporated.
- (b) We attended the annual general meeting of the association held on 28 November 2024.
- (c) We are authorised by the attached resolution of the committee to sign this certificate.
- (d) This special purpose financial report was submitted to the members of the association at its annual general meeting.

Chairperson



Toby Heydon

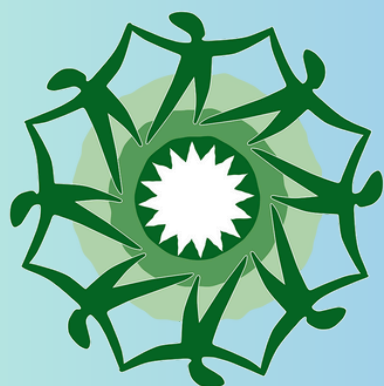
Treasurer



Bronwen Machin

Dated this

day of



**CASTLEMAINE
COMMUNITY
HOUSE**

Your Community House...

**30 Templeton Street
Castlemaine
Victoria, 3450**

**www.cch.org.au
reception@cch.org.au
ABN: 20 112 806 357**